

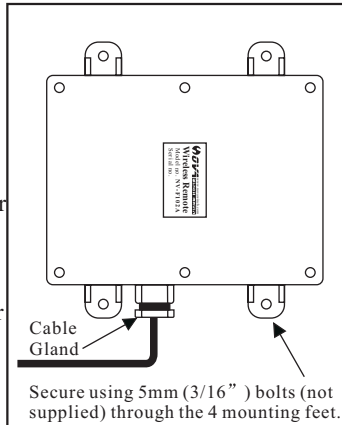
NV-F102A Instructions and Wiring Diagram 12/24 volt External

1. MOUNT RECEIVER

CAUTION
TAKE TIME TO LOCATE
THE BEST POSITION

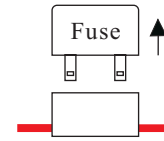
If necessary power the Receiver and move it around the vehicle until the required performance is achieved Operate the Transmitter and observe the Receiver internal LED's

Mount as **HIGH** as possible
AVOID surface with **HEAVY VIBRATION**
AVOID DIRECT SPRAY from wheels
In a **HOT CLIMATE** fit in a **SHADED** position
Cable gland should face **DOWN** or **BACK**

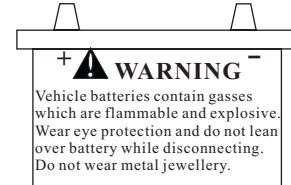


2. IDENTIFY POWER CONNECTION POINT AND ISOLATE SUPPLY

Remove fuse



Or Disconnect Battery



3. CONNECT WIRES

REMEMBER
Press the Transmitter **ON/OFF** button to activate the system.

IMPORTANT

stop

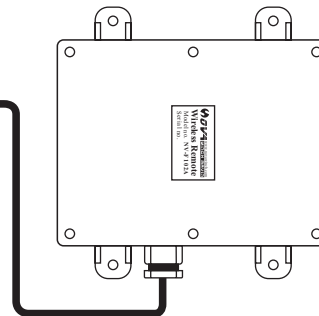
This receivers **MUST** have an isolation switch, to allow for registering a replacement transmitter

CAUTION
If Receiver outputs are connected in parallel with an external switching device . **DO NOT** operate the Transmitter and the external switches at the same time.

CAUTION
Outputs of all functions are rated at 5 Amps maximum each. The system is rated to a 10 Amps total output.

CAUTION
Must let out the wire rope on the winch before Connect battery or replace fuse.

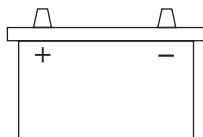
12/24 VOLTS POSITION +
NEGATIVE -
IN YELLOW
OUT YELLOW & GREEN



4. ACTIVATE SUPPLY

Replace fuse

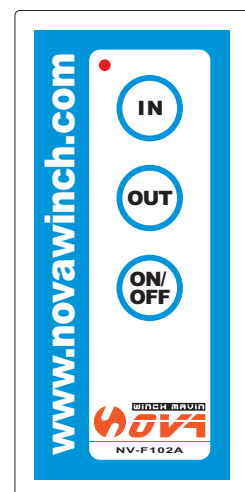
or Reconnect Battery



YOUR RECEIVER SHOULD NOW BE WORKING

5. TRANSMITTER

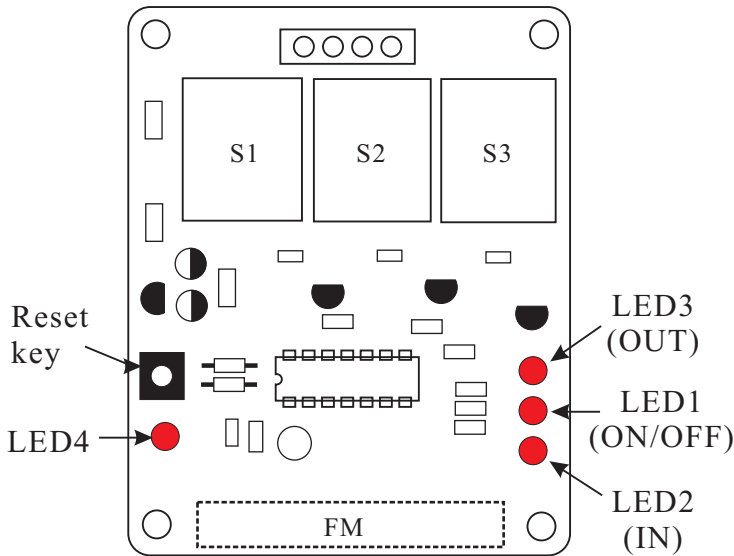
The workings of the wireless remote is that: Three buttons sign IN,OUT, ON/OFF respectively. When you press the ON/OFF button continuance more then 3 seconds , the transmitter begins work waiting from dormancy. At the same time , the total power of the receiver is switched on. When you press the IN button or OUT button ,the corresponding relay can works steadily,until you unlock it. When you press the ON/OFF button again,the relay of the total power supply in the receiver is cut . At the same time,the transmitter fall into dormancy.



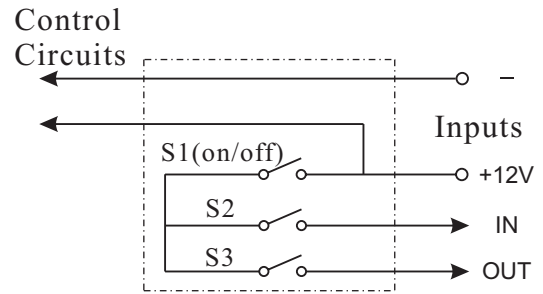
CAUTION

Wounding the wire rope according to the Winch Operation Instructions. Loose the button when the hook is 4 meters from the drum. Then, slowly wounding the wire rope to about 1 meter from the drum, then stop. Release the cluster, slowly wounding the rest of the wore rope the drum with hand.

6. The Sketch For The Receiver



7. Power Circuits



8. Receiver's Adjustment When Replacing The Transmitter

When purchasing new transmitter, you should re-code the receiver. Open the receiver's lid and press the reset key, the LED4 will be bright once. Then press any key of the transmitter for about 3 seconds, the moment the receiver indicator light will be bright once, that means the new transmitter's code-adjustment is finished. After that, cover the receiver's lid please. This receiver can memorize 10 code of the NV-F102 series transmitter. When you need to empty the code, you need press the reset key until the LED4 put out.

9. TROUBLE-SHOOTING AND MAINTAIN

CONDITION	POSSIBLE CAUSE	CORRECTION
Transmitter will not operate	<ol style="list-style-type: none"> 1. The battery voltage of the transmitter too low. 2. The temperature of the transmitter lower than -20°C. 3. The system has not been activated. 	<ol style="list-style-type: none"> 1. Replace battery. 2. In extremely cold weather, put the transmitter not in use into the pocket. 3. Press the Transmitter ON/OFF button to activate the system.
Receiver will not operate.	<ol style="list-style-type: none"> 1. Grounding failure. 2. Receiver and transmitter not matching. 	<ol style="list-style-type: none"> 1. Make sure the receiver grounding are good as well as the vehicle grounding. 2. Modulate the receiver (see section 6).
Winch operate discontinuously.	<ol style="list-style-type: none"> 1. The vehicle voltage too low. 2. There are obstacles between the receiver and the transmitter. 3. Available control distance too far. 4. Other out causes. 	<ol style="list-style-type: none"> 1. The voltage of the power in use higher than 8V. 2. Move the receiver and transmitter antenna to avoid obstacles. 3. Make sure to operate in available distance. 4. Move the transmitter controller to get efficient control.

10. Technical Date

10.1 Frequency	433.920MHz
10.2 Modulation	FM
10.3 Receiver Voltage	12V/ 24V DC
10.4 Transmitter Voltage	9V DC(6F22 BATTERY)
10.5 Remote-Control Distance	stadio 50m
10.6 Protection Class	Ip66
10.7 Temperature range	-20°C ~+40°C
10.8 Height	<1000m
10.9 Relay Output	5A

⚠ CAUTION
Type NV-F102A Wireless Remote is designed for use on the Winch remote control for front installation type in vehicle only. **It's not designed for and should not be used on winches or hoists in industrial applications (Car haulers/ carriers, Wreckers, Cranes, ETC.) Or for any other remote controlled application.**