



XDYNA™
Performance Extremely

Xdyna(Hangzhou) Technology Co.,Ltd

Address: No 279,Shiqiao Road, Xiacheng District,
Hangzhou, China.310022

Tel: 0086-571-88130305

Fax: 0086-571-88130305

Email: sales@xdyna.com

Website: www.xdyna.com



PERFORMANCE EXTREMELY

XDYNA

XDYNA™
Performance Extremely



About XDYNA

Based on the independent R&D ability, rich QC and manufacture experience, Xdyna is devoted to the mechanical and electrical products developing, manufacturing and marketing, including but not limited to DC motors, contactors, electrical controllers. To our proud, by now, Xdyna has been awarded 4 state rated R&D awards and 15 national patents, and more are on the way.

Teaming the engineers with nearly 10 years' winch experience, after analyzing technology trend, Xdyna is now presenting high quality winches with combinations of innovation, new functions, more durability, more reliability, and higher cost performance. Xdyna winches are featuring:

- Powerful Series-Wound motor with Bidirectional Electromagnetic Brake (BE Braker), which avoids heating the winch drum;
- PPCB (Permanent Pressure Carbon Brush Structure) prolongs the motor life nearly by 2.5 times;
- Two-speed Clutch System (Two-Speed Series) enables a wire rope spool-in speed at 28m/min under no load or light load;
- Automatic Clutch System (Top-Value Series) enables 100% gears engagement one time;
- Adjustable Torque Limiter (ATL) enhances the machine's reliability, and presents full consideration of emergency;
- Intelligent Handheld Controller spies battery condition, inspects winch electrical connections, and presents consideration of the controller laying;
- Integrated Self-lock Control Box leads to a higher electric conduction ability by twice, and ensures a higher system security;
- Compressed 4-way heavy duty Roller Fairlead reduces resistance during rope guide, and minimizes its size and weight.
- A full efficient QC system is built and all the winch is tested 100% to the limit.



Self-developed 500A solenoid Testing Table



Registered patents for Winch



Self-developed winch gear box testing table



Self-developed winch load testing machine with the max capacity of 20000lbs.

XDYNA TWO-SPEED Series

Unique Features:

- Powerful Series-Wound motor with Bidirectional Electromagnetic Brake (BE Braker), which avoids heating winch drum
- Integrated Self-lock Control Box leads to a higher electric conduction ability by twice, and ensures a higher system security;
- Two-speed Clutch System (Two-Speed Series) enables a wire rope spool-in speed at 28m/min under no load or light load;
- Adjustable Torque Limiter (ATL) enhances the machine's reliability, and presents full consideration of emergency;
- PPCB Permanent Pressure Carbon Brush Structure prolongs the motor life span nearly by 2.5 times.
- Intelligent Handheld Controller spies battery condition, inspects winch electrical connections, and presents consideration of the controller laying;
- Compressed 4-way heavy duty Roller Fairlead reduces resistance during rope guide, and minimizes its size and weight.

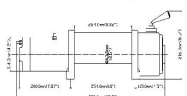
Models Available:

X8.5T(8500Lbs)	6.0hp series wound motor	24V-0854A	
	PIN 12V-0853A		
X9.0T(9000Lbs)	6.0hp series wound motor	24V-0904A	
	PIN 12V-0903A		
X9.5T(9500Lbs)	6.0hp series wound motor	24V-0954A	
	PIN 12V-0953A		
X10.0T(10000Lbs)	6.0hp series wound motor	24V-1004A	
	PIN 12V-1003A		
X10.5T(10500Lbs)	6.0hp series wound motor	24V-1054A	
	PIN 12V-1053A		
X11.0T(11000Lbs)	6.0hp series wound motor	24V-1104A	
	PIN 12V-1103A		
X11.5T(11500Lbs)	6.0hp series wound motor	24V-1154A	
	PIN 12V-1153A		
X12.0T(12000Lbs)	6.0hp series wound motor	24V-1204A	
	PIN 12V-1203A		
X12.5T(12500Lbs)	6.0hp series wound motor	24V-1254A	
	PIN 12V-1253A		

TWO-SPEED Series X8.5T(8500Lbs)

6.0hp series wound motor
P/N 12V-0853A 24V-0854A
6.8hp series wound motor
P/N 12V-0851A 24V-0852A

Dimensions and Mounting Bolt Pattern



Line Pull & Cable Capacity

Layer of cable	1	2	3	4
Rated line Lbs	8500	6920	5830	5040
Pull per Kgs	3850	3134	2640	2284
Cumulative Ft	16.4	41.3	70.8	91.8
Cable capacity m	5	12.6	21.6	28

Features & Specifications

Rated Line Pull 8500 lbs (3850kgs) Single-line
Motor 12V/24V 6.0hp, Series-Wound
6.8hp series wound motor available

Carbon Brush Ass'y Permanent Pressure Carbon Brush Structure (PPCB)
Control Intelligent Handheld Controller, 12" (3.7m) lead
Gear Train and Reduction Ratio 3 stage planetary, 205.7:1 (48:1 for high speed)

Clutch Two-speed clutch system, Sliding ring gear
Torque Limiter Included, Adjustable Torque Limiter (ATL)
Braking Automatic, Bidirectional Electromagnetic Braker (BE Braker) in Motor
Drum Size Diameter 2.5" (63.5mm) ; Length 8.82" (224mm)
Wire Rope Diameter 21/64" (8.2mm) ; Length 94' (28.5m)
Fairlead 4-way heavy duty compressed roller fairlead

Recommended battery 650CCA minimum for winching
Battery Leads 25mm²; Length 72" (1.83m)
Control Box Integrated control box
Finish Dark Grey
Weight 84lbs (38kgs)

Overall Dimensions: (LxWxH)22.8"x 6.4"x 8.5"(580mmx162mmx216mm)
for 6.8HP series wound motor
(LxWxH)22"x 6.4"x 8.5"(560mmx162mmx216mm)
for 6.0HP series wound motor

Mounting Bolt Pattern: 10+/-0.015IN x 4.5+/-0.01IN(254 mm x 114.3mm)

Line Speed & Amp Draw- First Layer

Line pull	Lbs	Kgs	NO		1500		3000		6000		8000		9500	
			load	680	1360	2718	3624	3850						
Line Speed	Ft/min	12V	93.5	27.9	6.1	10.8	8.9	7.4						
		24V	98.4	30.2	20.0	15.4	11.5	10.5						
Line Speed	M/min	12V	28.5	8.5	4.9	3.3	2.7	2.3						
		24V	30	9.2	6.1	4.7	3.5	3.2						
Motor Current	Amps	12V	85	170	230	300	395	400						
		24V	50	80	120	155	190	205						

TWO-SPEED Series X9.5T(9500Lbs)

6.0hp series wound motor
P/N 12V-0953A 24V-0954A
6.8hp series wound motor
P/N 12V-0951A 24V-0952A

Features & Specifications

Rated Line Pull 9500 lbs (4300kgs) Single-line
Motor 12V/24V 6.0hp, Series-Wound
6.8hp series wound motor available

Carbon Brush Ass'y Permanent Pressure Carbon Brush Structure (PPCB)
Control Intelligent Handheld Controller, 12" (3.7m) lead
Gear Train and Reduction Ratio 3 stage planetary, 205.7:1 (48:1 for high speed)

Clutch Two-speed clutch system, Sliding ring gear
Torque Limiter Included, Adjustable Torque Limiter (ATL)
Braking Automatic, Bidirectional Electromagnetic Braker (BE Braker) in Motor
Drum Size Diameter 2.5" (63.5mm) ; Length 8.82" (224mm)
Wire Rope Diameter 23/64" (9.2mm) ; Length 94' (28.5m)
Fairlead 4-way heavy duty compressed roller fairlead

Recommended Battery 650CCA minimum for winching
Battery Leads 25mm²; Length 72" (1.83m)
Control Box Integrated control box
Finish Dark Grey
Weight 88lbs (40kgs)

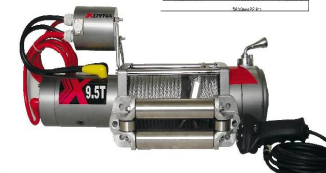
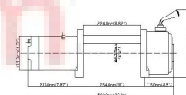
Overall Dimensions: (LxWxH)22.8"x 6.4"x 8.5"(580mmx162mmx216mm)
for 6.8HP series wound motor
(LxWxH)22"x 6.4"x 8.5"(560mmx162mmx216mm)
for 6.0HP series wound motor

Mounting Bolt Pattern: 10+/-0.015IN x 4.5+/-0.01IN(254 mm x 114.3mm)

Line Speed & Amp Draw- First Layer

Line pull	Lbs	Kgs	NO		1500		3000		6000		8000		9500	
			load	680	1360	2718	3624	4300						
Line Speed	Ft/min	12V	93.5	27.9	13.4	10.2	9.2	7.4						
		24V	98.4	30.2	17.1	14.1	12.1	10.5						
Line Speed	M/min	12V	28.5	8.5	4.1	3.1	2.8	2.3						
		24V	30	9.2	5.2	4.3	3.7	3.2						
Motor Current	Amps	12V	85	150	210	300	365	410						
		24V	50	80	110	135	175	210						

Dimensions and Mounting Bolt Pattern



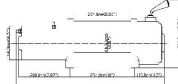
Line Pull & Cable Capacity

Layer of cable	1	2	3	4
Rated line Lbs	9500	7580	6310	5400
Pull per Kgs	4300	3430	2860	2450
Cumulative Ft	14.4	37.4	64.9	91.8
Cable capacity m	4.4	11.4	19.8	28

TWO-SPEED Series X12.0T(12000Lbs)

6.0hp series wound motor
 P/N 12V-1203A 24V-1204A
 6.0hp series wound motor
 P/N 12V-1201A 24V-1202A

Dimensions and Mounting Bolt Pattern



Line Pull & Cable Capacity

Layer of cable	1	2	3	4
Rated line	Lbs 12000	9520	7890	6740
Pull per	Kgs 5440	4310	3570	3050
Cumulative	Ft 14.1	36.4	63.3	91.8
Cable capacity	m 4.3	11.1	19.3	28

Features & Specifications

Rated Line Pull Motor 12000 lbs (5442kgs) Single-line 12V/24V 6.0hp, Series-Wound
 6.0hp series wound motor available
 Carbon Brush Ass'y Permanent Pressure Carbon Brush Structure (PPCB)
 Control Intelligent Handheld Controller, 12 (3.7m) lead
 Gear Train and Reduction Ratio 3 stage planetary, 205.7:1 (48:1 for high speed)
 Clutch Two-speed clutch system, Sliding ring gear
 Torque Limiter Included, Adjustable Torque Limiter (ATL)
 Braking Automatic, Bidirectional Electromagnetic Braker (BE Braker) in Motor
 Drum Size Diameter 2.5" (63.5mm) ; Length 8.82" (224mm)
 Wire Rope Diameter 3/8" (9.5mm) ; Length 94' (28.5m)
 Fairlead 4-way heavy duty compressed roller fairlead
 Recommended Battery 650CCA minimum for winching
 Battery Leads 25mm²; Length 72" (1.83m)
 Control Box Integrated control box
 Finish Dark Grey
 Weight 93lbs (42kgs)
 Overall Dimensions (LxWxH) 23.6" x 6.4" x 8.5" (600mm x 162mm x 216mm) for 6.0HP series wound motor
 (LxWxH) 22.8" x 6.4" x 8.5" (580mm x 162mm x 216mm) for 6.0HP series wound motor
 Mounting Bolt Pattern: 10" x 0.015IN x 4.5" x 0.01IN / 254 mm x 114.3mm

Line Speed & Amp Draw- First Layer

Line pull	Lbs	Kgs	NO load	1500	3000	6000	9000	12000
				load	load	load	load	load
Line Speed	F/min	12V	86.9	26.9	12.1	9.5	7.2	4.9
	24V	91.8	29.8	14.4	11.8	9.5	7.2	
M/min	12V	26.5	8.2	3.7	2.9	2.2	1.5	
	24V	28	9.1	4.4	3.6	2.9	2.2	
Motor Current	Amps	12V	80	120	160	230	320	430
	24V	45	80	110	135	180	215	

XDYNA TOP-VALUE Series

Unique Features:

• Powerful Series-Wound motor with Bidirectional Electromagnetic Brake (BE Braker), which avoids heating winch drum

• ISM inside the Control Box leads to a higher electric conduction ability by twice, and ensures more durability;

• Clutch System enables 100% gears engagement one time.

• PPCB Permanent Pressure Carbon Brush Structure prolongs the motor life span nearly by 2.5 times.

• Compressed 4-way heavy duty Roller Fairlead reduces resistance during rope guide, and minimizes its size and weight.

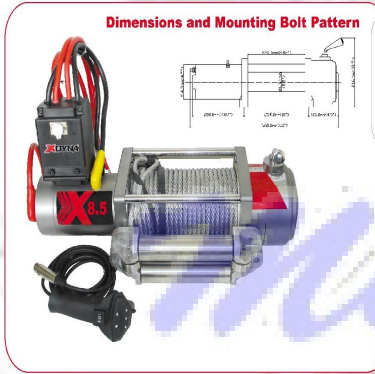
• Intelligent Handheld Controller spies battery condition, inspects winch electrical connections, and presents consideration of the controller laying;

Models Available:

X8.5(8500Lbs)	6.0hp series wound motor P/N 12V-0853C	24V-0854C	X10.0(10000Lbs)	6.0hp series wound motor P/N 12V-1003C	24V-1004C
X9.0(9000Lbs)	6.0hp series wound motor P/N 12V-0903C	24V-0904C	X12.0(12000Lbs)	6.0hp series wound motor P/N 12V-1203C	24V-1204C
X9.5(9500Lbs)	6.0hp series wound motor P/N 12V-0953C	24V-0954C			

TOP-VALUE Series X8.5(8500Lbs)
(Can be marked 9000Lbs)

6.0hp series wound motor
P/N 12V-0853C 24V-0854C



Dimensions and Mounting Bolt Pattern

Line Pull & Cable Capacity

Layer of cable	1	2	3	4
Rated line Lbs	8500	6920	5830	5040
Pull per Kgs	3850	3134	2640	2284
Cumulative Ft	16.4	41.3	70.8	91.8
Cable capacity m	5	12.6	21.6	28

Features & Specifications

- Rated Line Pull: 8500 lbs (3850kgs) Single-line
- Motor: 12V/24V 6.0hp, Series Wound
- Carbon Brush Assy: Permanent Pressure Carbon Brush Structure (PPCB)
- Control: Intelligent Handheld Controller, 12' (3.7m) lead
- Gear Train and Reduction Ratio: 3 stage planetary, 246.8:1
- Clutch: Sliding ring gear, 100% engagement one time
- Torque Limiter: Included, Adjustable Torque Limiter (ATL)
- Braking: Automatic, Bidirectional Electromagnetic Braker (BE Braker) in Motor
- Drum Size: Diameter 2.5" (63.5mm) ; Length 8.82" (224mm)
- Wire Rope: Diameter 21/64" (8.2mm); Length 94' (28.5m)
- Fairlead: 4-way heavy duty compressed roller fairlead
- Recommended Battery: 650CCA minimum for winching
- Battery Leads: 25mm²; Length 72" (1.83m)
- Control Box: ISM (integrated solenoid module) inside
- Finish: Dark Grey
- Weight: 84lbs (38kgs)
- Overall Dimensions: (L x W x H)22" x 6.4" x 8.5" (560mm x 162mm x 216mm)
- Mounting Bolt Pattern: 10+/-0.015IN x 4.5+/-0.01IN (254mm x 114.3mm)

Line Speed & Amp Draw- First Layer

Line pull	Lbs Kgs	NO load	1500	3000	6000	8500	
			680	1360	2718	3850	
Line Speed	Ft/min	12V	29.2	20.0	15.7	10.8	7.5
		24V	34.5	23.9	19.0	15.1	10.1
	M/min	12V	8.9	6.1	4.8	3.3	2.3
		24V	10.5	7.3	5.8	4.6	3.1
Motor Current	Amps	12V	80	155	210	280	400
		24V	45	80	110	140	200

6 >>>

TOP-VALUE Series X9.5(9500Lbs)
(Can be marked 10000Lbs)

6.0hp series wound motor
P/N 12V-0853C 24V-0854C

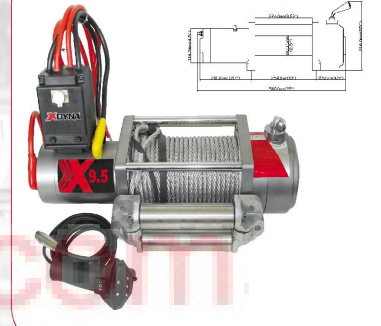
Features & Specifications

- Rated Line Pull: 9500 lbs (4300kgs) Single-line
- Motor: 12V/24V 6.0hp, Series Wound
- Carbon Brush Assy: Permanent Pressure Carbon Brush Structure (PPCB)
- Control: Intelligent Handheld Controller, 12' (3.7m) lead
- Gear Train and Reduction Ratio: 3 stage planetary, 246.8:1
- Clutch: Sliding ring gear, 100% engagement one time
- Torque Limiter: Included, Adjustable Torque Limiter (ATL)
- Braking: Automatic, Bidirectional Electromagnetic Braker (BE Braker) in Motor
- Drum Size: Diameter 2.5" (63.5mm) ; Length 8.82" (224mm)
- Wire Rope: Diameter 23/64" (9.2mm); Length 94' (28.5m)
- Fairlead: 4-way heavy duty compressed roller fairlead
- Recommended Battery: 650CCA minimum for winching
- Battery Leads: 25mm²; Length 72" (1.83m)
- Control Box: ISM (integrated solenoid module) inside
- Finish: Dark Grey
- Weight: 89lbs (40kgs)
- Overall Dimensions: (L x W x H)22" x 6.4" x 8.5" (560mm x 162mm x 216mm)
- Mounting Bolt Pattern: 10+/-0.015IN x 4.5+/-0.01IN (254mm x 114.3mm)

Line Speed & Amp Draw- First Layer

Line pull	Lbs Kgs	NO load	1500	3000	6000	8000	9500	
			680	1360	2720	3620	4300	
Line Speed	Ft/min	12V	29.2	14.8	12.8	10.1	9.2	7.5
		24V	34.5	20.7	16.1	14.1	12.1	10.5
	M/min	12V	8.9	4.5	3.9	3.1	2.8	2.3
		24V	10.5	6.3	4.9	4.3	3.7	3.2
Motor Current	Amps	12V	80	155	185	280	350	400
		24V	45	80	100	130	170	200

Dimensions and Mounting Bolt Pattern



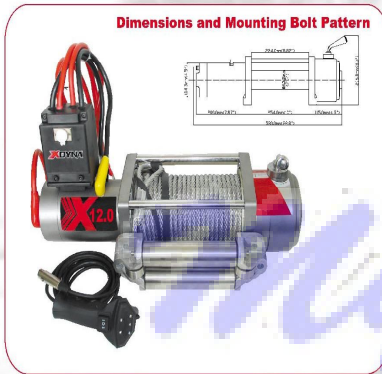
Line Pull & Cable Capacity

Layer of cable	1	2	3	4
Rated line Lbs	9500	7580	6310	5400
Pull per Kgs	4300	3430	2860	2450
Cumulative Ft	14.4	37.4	64.9	91.8
Cable capacity m	4.4	11.4	19.8	28

<<< 7

TOP-VALUE Series X12.0(12000Lbs)

6.0hp series wound motor
P/N 12V-1203C 24V-1204C



Line Pull & Cable Capacity

Layer of cable	1	2	3	4
Rated line	Lbs 12000	9520	7890	6740
Pull per	Kgs 5440	4310	3570	3050
Cumulative	Ft 14.1	36.4	63.3	94
Cable capacity	m 4.3	11.1	19.3	28

Line Speed & Amp Draw- First Layer

Line pull	Lbs Kga	load					
		NO	1500	3000	6000	9000	12000
Line Speed	Ft/min	12V 23.6	13.8	11.8	9.2	6.9	4.6
	24V	26.6	16.7	14.1	11.5	9.2	6.9
M/min	12V	7.2	4.2	3.6	2.8	2.1	1.4
	24V	8.1	5.1	4.3	3.5	2.8	2.0
Motor Current	Amps	12V 80	120	155	220	310	415
	24V	45	80	105	130	175	205

Features & Specifications

Rated Line Pull	12000 lbs (5442kgs) Single-line
Motor	12V /24V 6.0hp, Series Wound
Carbon Brush Ass'y	Permanent Pressure Carbon Brush Structure (PPCB)
Control	Intelligent Handheld Controller, 12' (3.7m) lead
Gear Train and Reduction Ratio	3 stage planetary, 246:8:1
Clutch	Sliding ring gear, 100% engagement one time
Torque Limiter	Included, Adjustable Torque Limiter (ATL)
Braking	Automatic, Bidirectional Electromagnetic Braker (BE Braker) in Motor
Drum Size	Diameter 2.5" (63.5mm) ; Length 8.82" (224mm)
Wire Rope	Diameter 3/8" (9.5mm); Length 94' (28.5m)
Fairlead	4-way heavy duty compressed roller fairlead
Recommended Battery	650CCA minimum for winching
Battery Leads	25mm ² ; Length 72" (1.83m)
Control Box	ISM (integrated solenoid module) inside
Finish	Dark Grey
Weight:	92lbs (42kgs)
Overall Dimensions:	(L x W x H)22.8" x 6.4" x 8.5" (580mm x 162mm x 216mm)
Mounting Bolt Pattern:	10+/-0.015IN x 4.5+/-0.01IN (254mm x 114.3mm)

8 >>>

XDYNA ACCESSORIES



Integrated control box P/N: CB01



Control Box with ISM (Integrated Solenoid Module) Inside. P/N: CB02



Standard Winch Mount Plate P/N: MP01



Intelligent Handheld Controller
P/N: H001 It can be made universal by changing the socket & plug.



Compressed 4-way Heavy Duty Roller Fairlead
P/N: CR01 It reduces resistance during rope guide, and minimizes its size and weight.



4" snatch block
P/N: SL01 capacity 8000 kgs

XDYNA WINCH DIY

Various alternatives are offered in WINCH DIY. You can decide the winch motor power, control box style, clutch system, winch accessories and etc, to make a winch meeting your requirements better. Please visit www.xdyna.com for more information. Thank you.